

Lichtheimia corymbifera

Previously known as *Absidia*

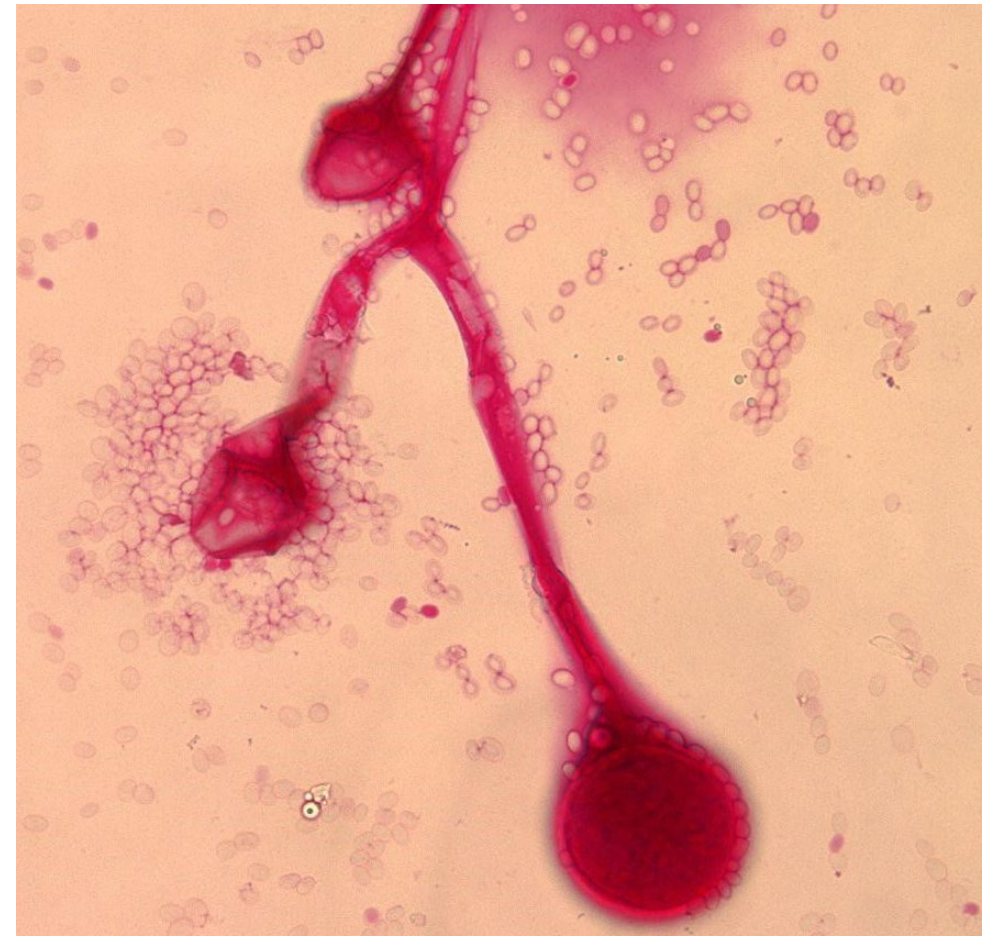
One of the zygomycetes

Rhinocerebral disease in **DM / steroid-induced hyperglycemia / imm.supp.** Inhaled spores cause infection in paranasal sinuses which spread destructively through adjacent tissues

Pulmonary disease – haem malig, high Fe states, DM. Inhaled spores lead to pulmonary infarction and cavities

Also: GI, skin, disseminated and CNS. Consider in people who **inject drugs** and those with **burns**.

May be difficult to culture. +microscopy from a sterile site with correlating clinical syndrome is enough to be significant.



Lichtheimia corymbifera

Microscopically: broad, infrequently septate, thin-walled hyphae; may have focal bulbous dilations and irregular branching

Macroscopically: