

Fusarium solani

Worldwide in soil and water; causes crop disease in agriculture

Commonest pathogenic *Fusarium* species isolated in human

Disease in imm.competent usu ass^d with trauma/ foreign body, and is superficial and localised.

++ disseminated disease in **haem** malignancies and HSCT patients => **refractory fever, skin lesions** (painful, nodular, central necrosis) and **sino-pulmonary** disease.

+**BC in 40%** with disseminated fusariosis

1,3-β-D-glucan usually positive; may crossreact and give +GM

High mortality in imm.supp^d esp if persistent neutropenia or steroids

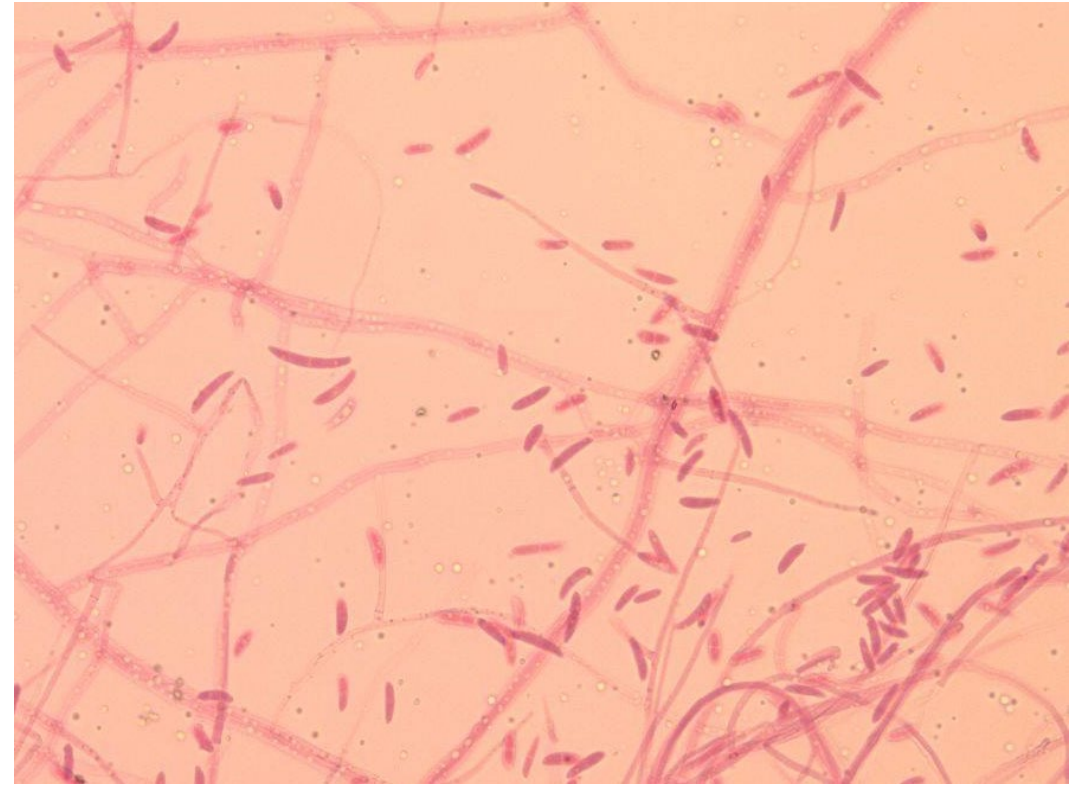


Image c/o S. Morris-Jones, UCLH

Fusarium solani

Microscopically: curved (**banana-shaped**) multicellular macroconidia, thick outer cell wall with 3-5 inner septae; 1-3 celled microconidia in false heads; long branched monophilaides; septate hyaline hyphae.

Macroscopically: Grows rapidly at 25°C, woolly, white top; cream reverse.